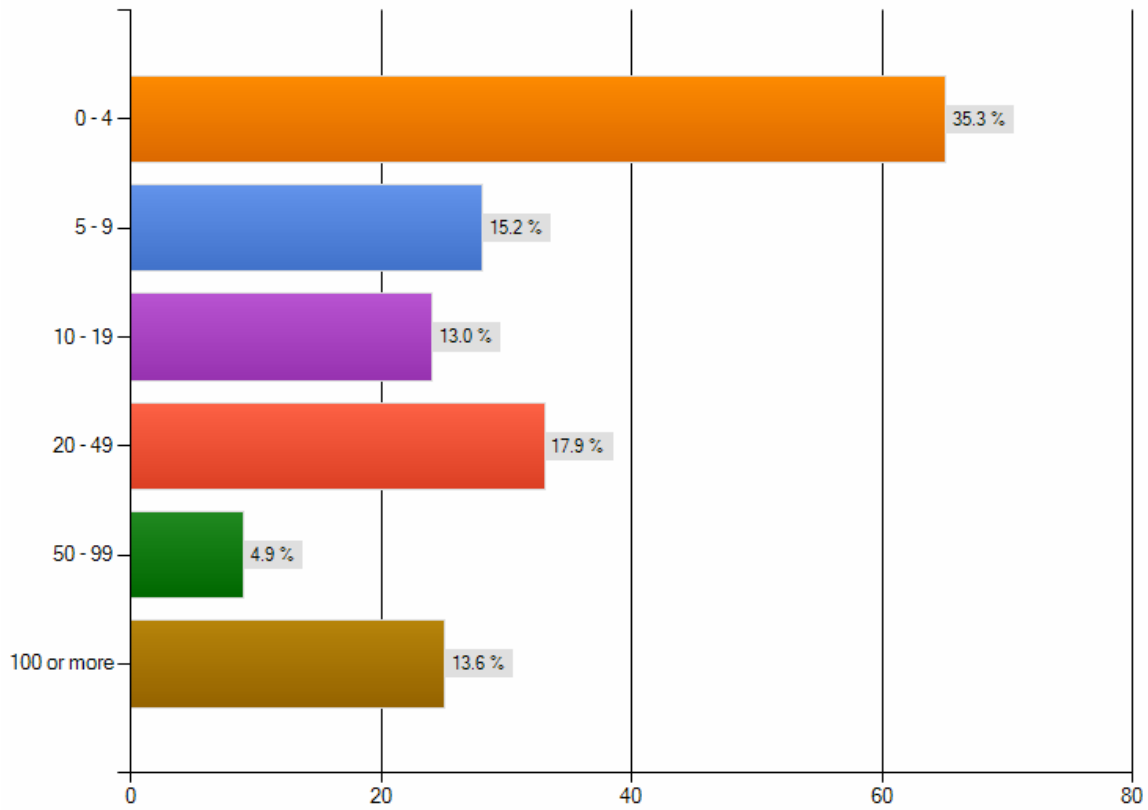
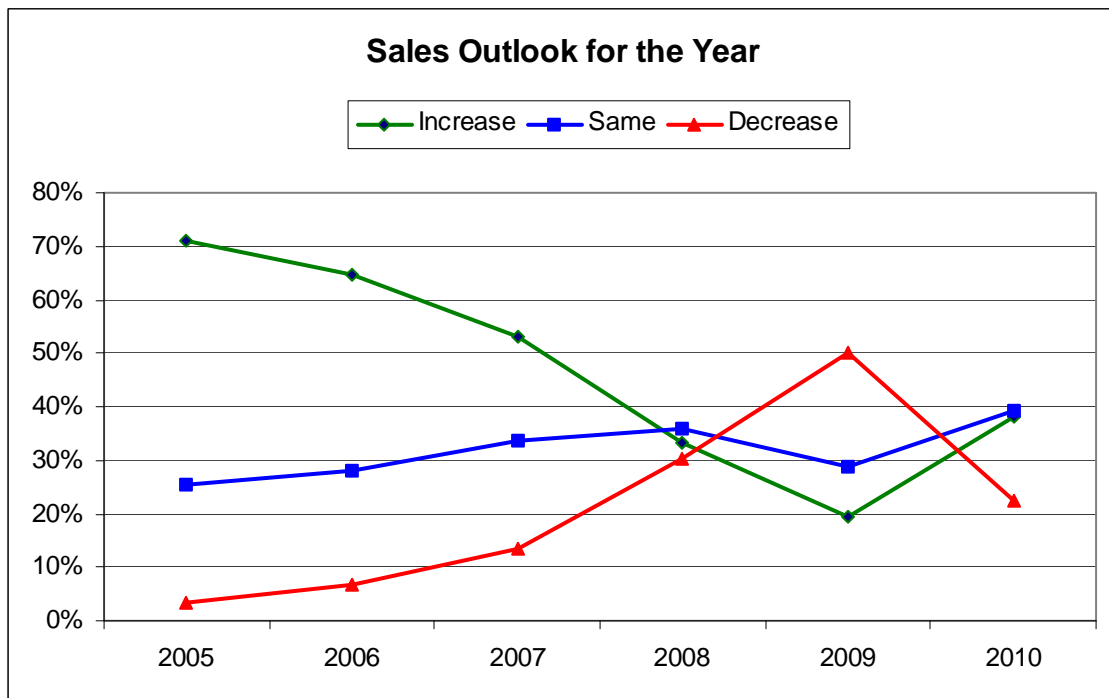


Alliance 2010 Stanislaus Economic Outlook Survey Results

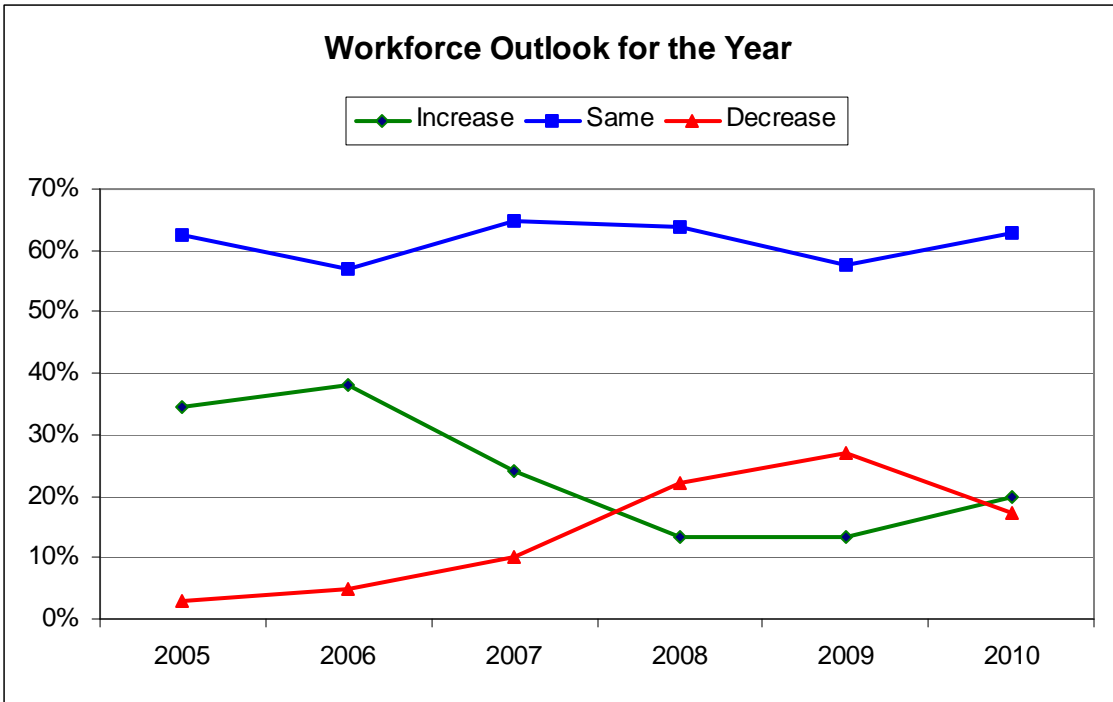
How many employees do you have, including full and part-time staff?



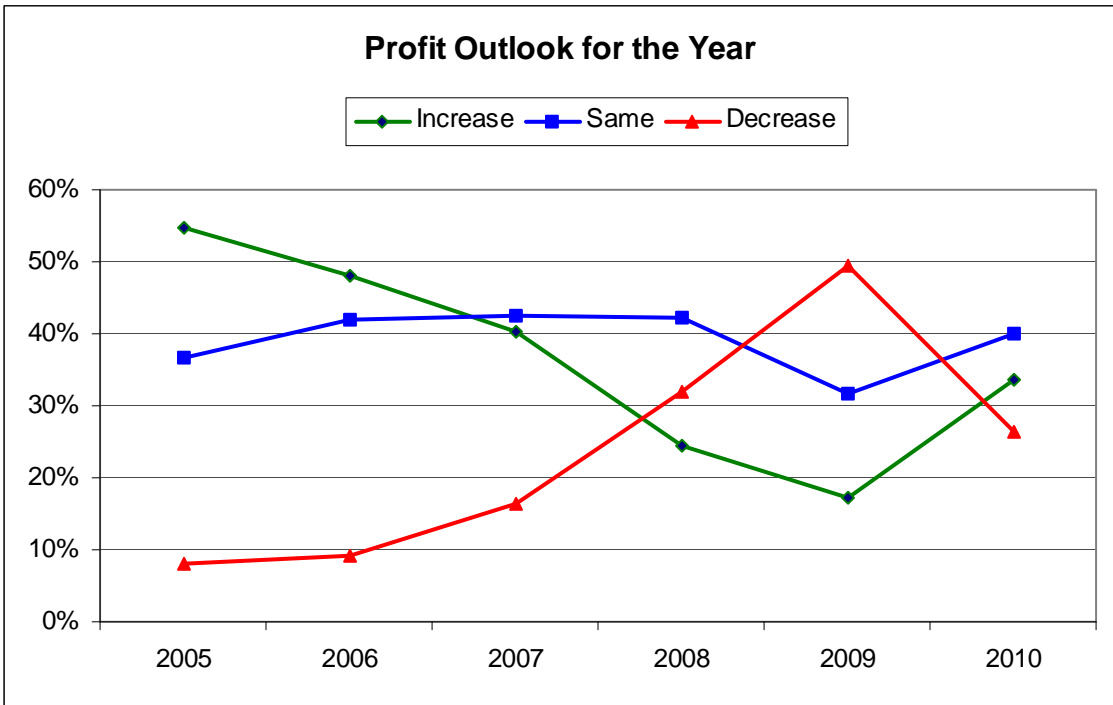
Survey respondents represented a range of employer sizes.



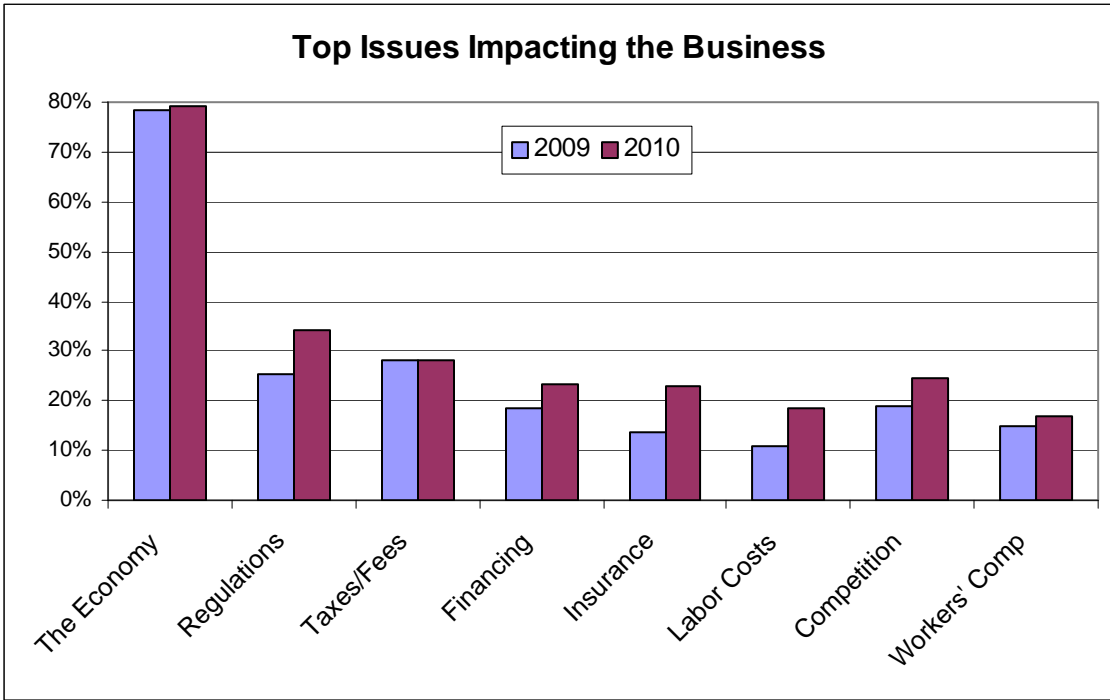
The sales outlook, though still relatively weak, showed signs of improvement in 2010.



The hiring outlook improved somewhat from the depressed levels of 2008 and 2009.

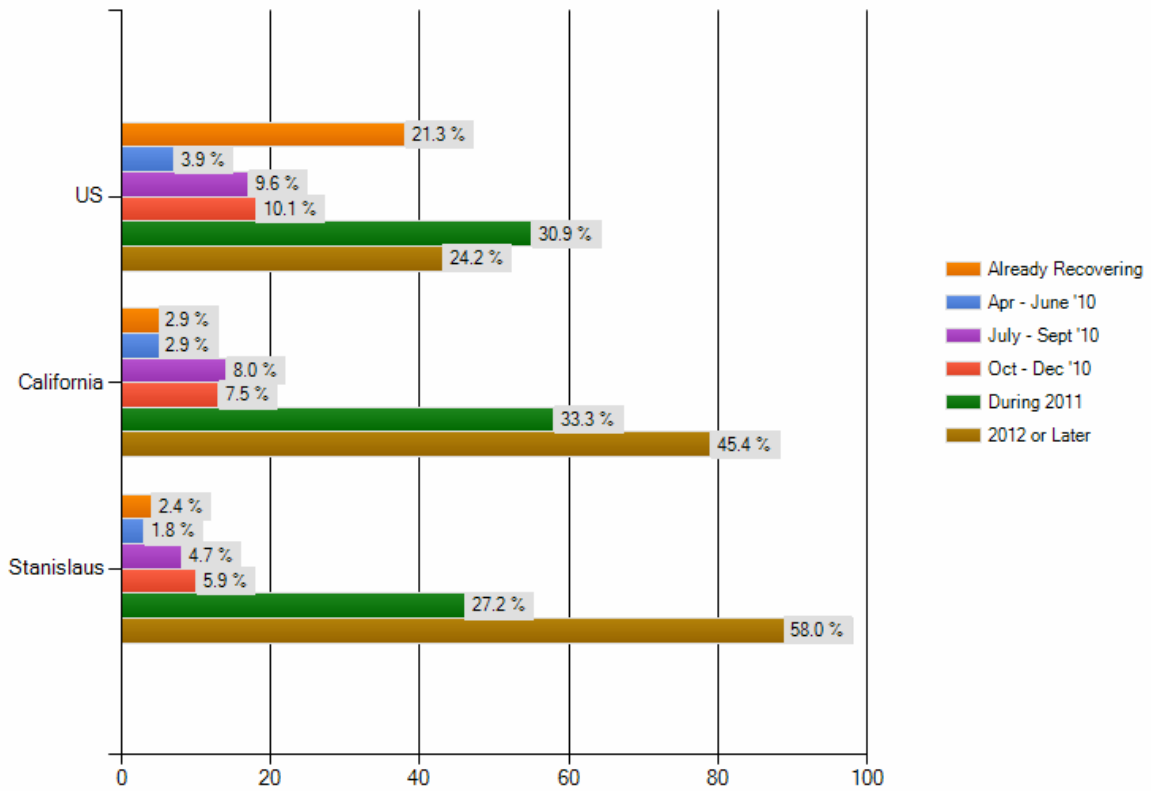


More firms expect profits to rise rather than decrease for the first time since 2007.



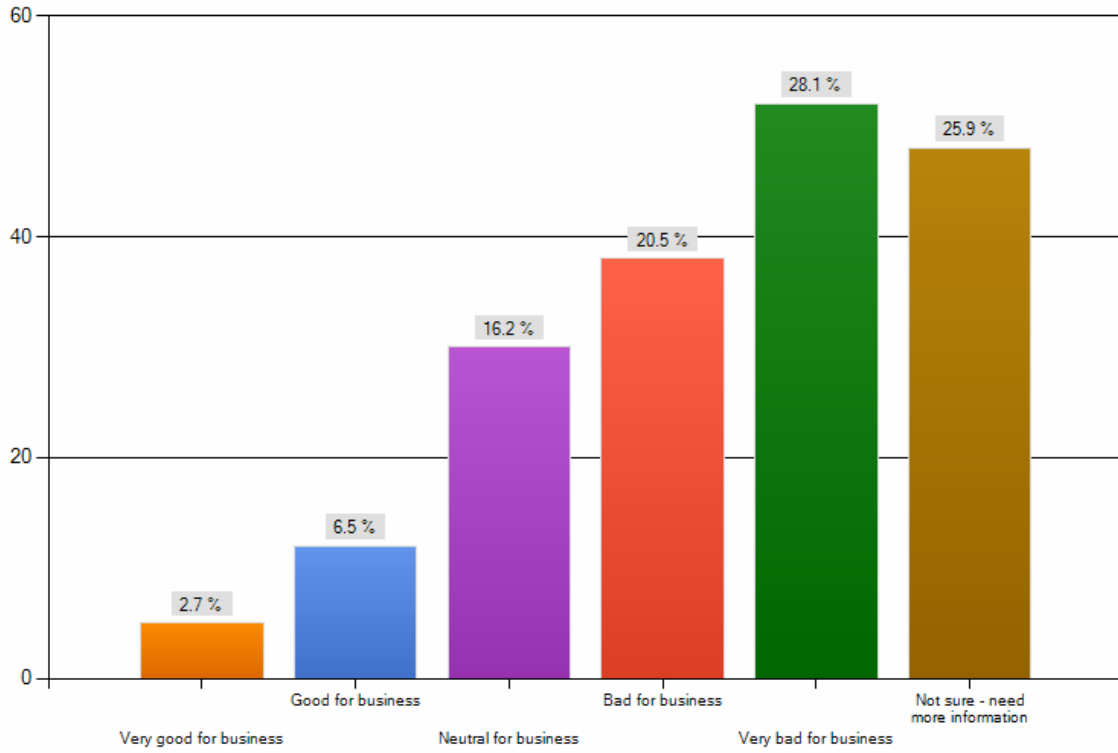
The Economy remained the biggest negative issue, but almost all areas of concern grew. Regulations and Insurance witnessed the largest increases.

When do you think the US, California, and Stanislaus economies will begin to recover?



Survey responses revealed a great deal of skepticism about timing of the economic recovery.

The President recently signed the health reform bill into law. How do you believe this will affect your business?



Recently enacted health reform legislation is a concern for many businesses. There is also a great need for additional information on this topic.